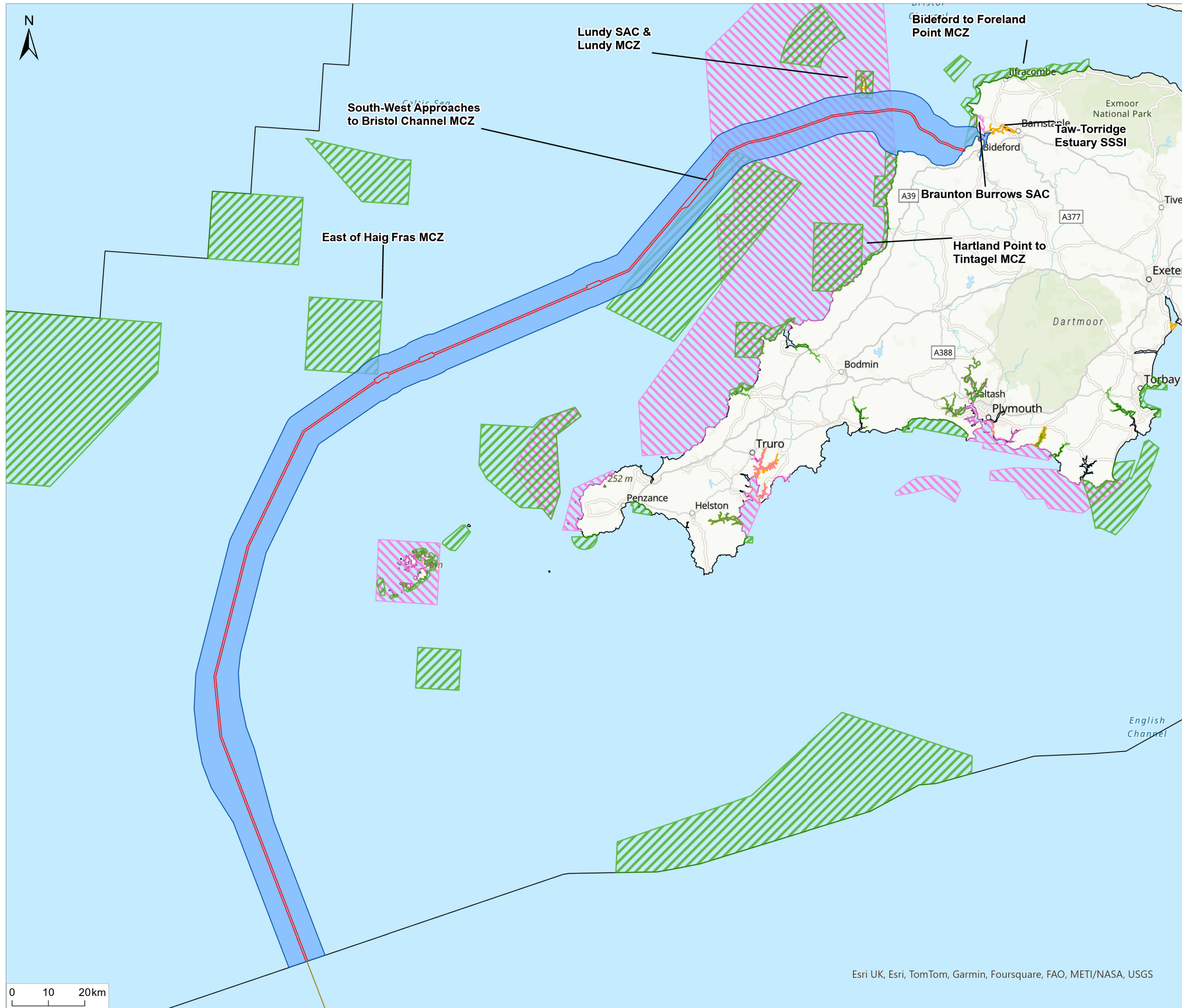


\\corpukcloud\uk-gis\01\data\70107275 - Xlinks\132\_GIS\ArcGIS\Pro\Projects\Benthic Ecology\794\_PLN-ESH-00033 - 1 - Designated Sites with Benthic Features.aprx



**Notes**  
 1. This plan is scaled at paper size A3. If received electronically it is the recipient's responsibility to print to the correct scale. Only written dimensions should be used.

- Legend**
- Indicative Cable Centreline
  - UK Offshore Cable Corridor
  - Benthic Ecology Study Area (5 km, extending to 15.2 km at locations where sediment was found to not fall out of suspension)
  - Special Areas of Conservation (SAC)
  - Marine Conservation Zone (MCZ)
  - Site of Special Scientific Interest (SSSI)
  - UK Exclusive Economic Zone (EEZ)



P01	FINAL	MP	TM	Nov 2024
Rev	Description	By	CB	Date



Client Xlinks 1 Limited  
 Project Xlinks' Morocco-UK Power Project  
 Title Designated Sites with Benthic Features

APFP Reg: 5(2)(a)

Status	Scale @ A3	Date Created
FINAL	1:1,000,000	Nov 2024
Figure Number		Rev
<b>1.4</b>		<b>P01</b>

[www.xlinks.co](http://www.xlinks.co)

Esri UK, Esri, TomTom, Garmin, Foursquare, FAO, METI/NASA, USGS